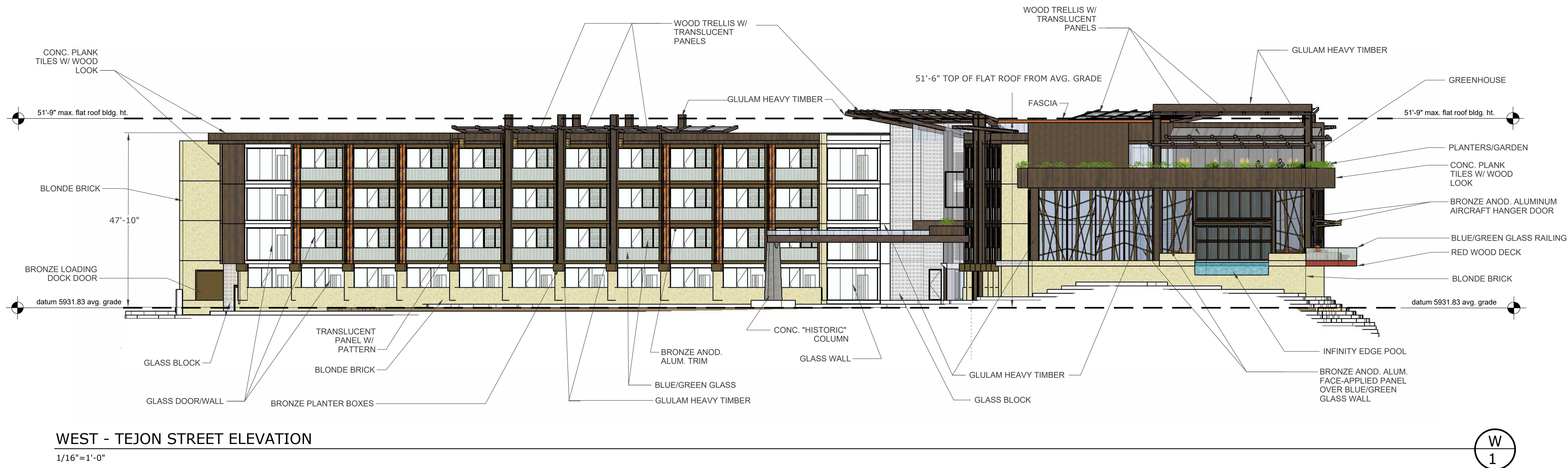
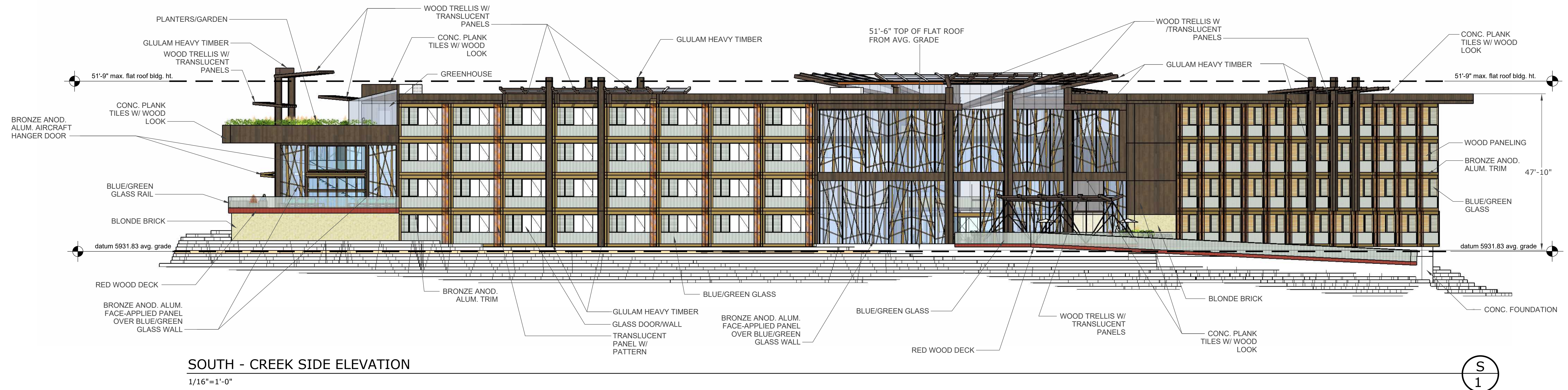
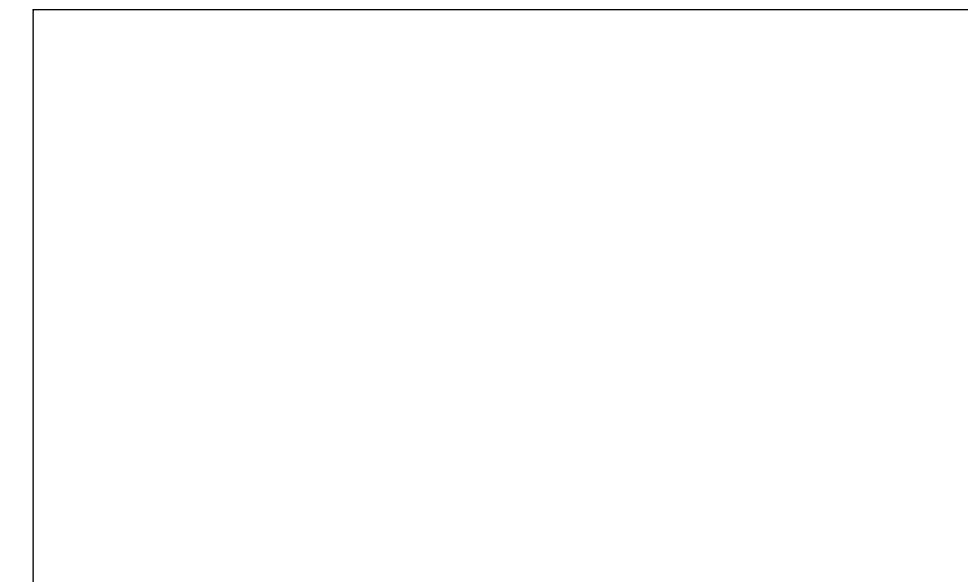


IVYWILD HOTEL

A REPLAT OF A PORTION OF LOTS 5-10, BLOCK 2, MADDOCKS ADDITION TO IVYWILD; ALONG WITH LOT 1, BLOCK 2, WILLIAMSON'S ADDITION TO IVYWILD; ALONG WITH TRACT A, SHOPPES ON SOUTH NEVADA FILING NO. 1; ALONG WITH TRACT A, RAMONA RETAIL CENTER ALL BEING A PORTION OF THE SW1/4 OF SECTION 19 & THE NW1/4 OF SECTION 30, TOWNSHIP 14 SOUTH, RANGE 66 WEST OF THE 6TH P.M. CITY OF COLORADO SPRINGS, COUNTY OF EL PASO, STATE OF COLORADO

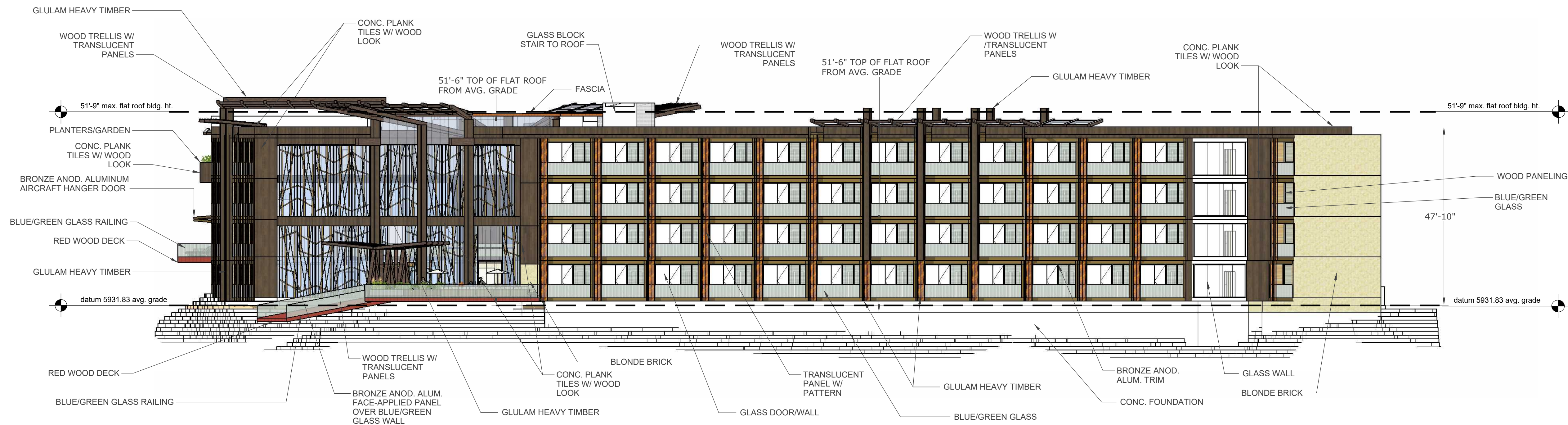


CITY APPROVAL:



IVYWILD HOTEL

A REPLAT OF A PORTION OF LOTS 5-10, BLOCK 2, MADDOCKS ADDITION TO IVYWILD; ALONG WITH LOT 1, BLOCK 2, WILLIAMSON'S ADDITION TO IVYWILD; ALONG WITH TRACT A, SHOPPES ON SOUTH NEVADA FILING NO. 1; ALONG WITH TRACT A, RAMONA RETAIL CENTER ALL BEING A PORTION OF THE SW1/4 OF SECTION 19 & THE NW1/4 OF SECTION 30, TOWNSHIP 14 SOUTH, RANGE 66 WEST OF THE 6TH P.M. CITY OF COLORADO SPRINGS, COUNTY OF EL PASO, STATE OF COLORADO



EAST - CREEK SIDE ELEVATION

1/16"=1'-0"

E
1



NORTH - NAVAJO STREET ELEVATION

1/16"=1'-0"

N
1

CITY APPROVAL:

